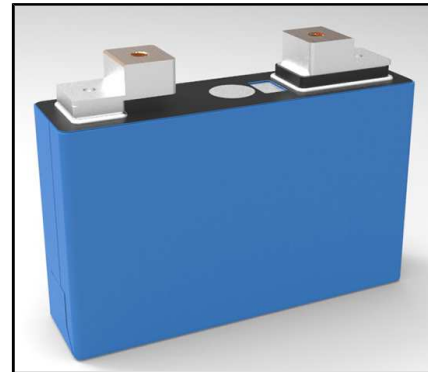


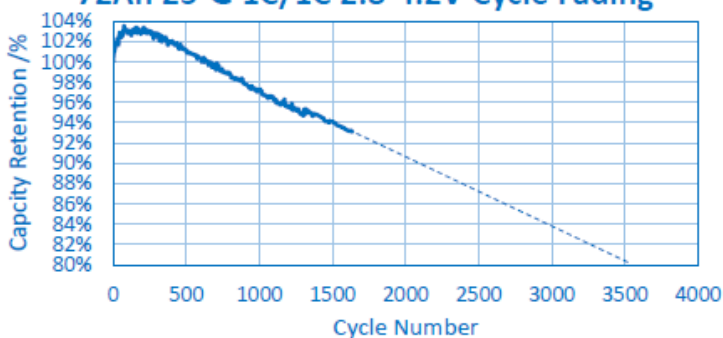
BATTERIES

ETC-NCM72W / ETC-NCM72S



	Dimension (excluding terminals)	40mm x 149mm x 92mm
	Weight	Max. 1350 g
	Min. capacity	72Ah (1/3C) @ 25°C
	Min. energy	263 Wh (1/3C) @ 25°C
	SOC window	15 ~ 95 %
	Terminal	Welding terminal / Screw Terminal
Voltage	Max.	4.20 V
	Nominal	3.65 V
	Min.	3.00 V
Energy density	Gravimetric	205Wh/kg
	Volumetric	493Wh/L
Temp. Condition	Operation (Charge)	-15 ~ 55°C (-15°C ≤ 0.05C to 80%SOC)
	Operation (Discharge)	-30 ~ 55°C
	Storage	-30 ~ 55°C
Self-Discharge Rate	100% SOC, 25°C, 1month	≤3%
Fast charging ability	25°C	30min, 80%SOC
High temperature storage	60°C, 30Days, irreversible capacity loss	<5%
Cycle Life	1C/1C, 80% DOD 25°C	2,000 cycles
	1C/1C, 80% DOD 45°C	1,000 cycles
Abuse test	Overcharge, Over-discharge, Short, Heat	GB/T 31485-2015

72Ah 25°C 1C/1C 2.8-4.2V Cycle Fading



72Ah 60°C 1C/1C 2.8-4.2V Cycle Fading

