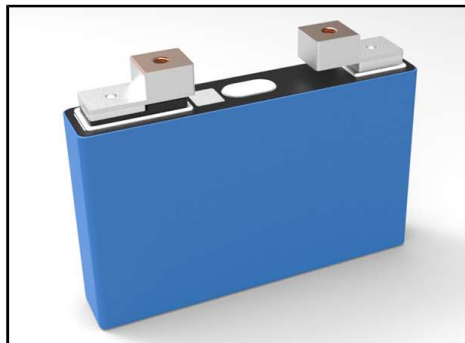


BATTERIES

ETC-NCM53W / ETC-NCM53S



Dimension (excluding terminals)

Weight

Min. capacity

Min. energy

SOC window

Terminal

Max.

Nominal

Min.

Gravimetric

Volumetric

Operation (Charge)

Operation (Discharge)

Storage

100% SOC, 25°C, 1month

25°C

60°C, 30Days, irreversible capacity loss

1C/1C, 80% DOD 25°C

1C/1C, 80% DOD 45°C

35°C average temperature

SOC100%, 25°C

Overcharge, Over-discharge, Short, Heat

27mm x148mm x 96mm

Max. 940 g

55Ah (1/3C) @ 25°C

204 Wh (1/3C) @ 25°C

15 ~ 95 %

Welding terminal

4.35 V

3.72 V

2.80 V

220Wh/kg

550Wh/L

-15 ~ 60°C (-15°C ≤ 0.05C to 80%SOC)

-30 ~ 60°C

-30 ~ 60°C

≤3%

30min, 80%SOC

< 5%

2,000 cycles

1,000 cycles

5years/100000Km

On going (15yrs est.)

GB/T 31485-2015

Voltage

Energy density

Temp. Condition

Self-Discharge Rate

Fast charging ability

High temperature storage

Cycle Life

Service Life

Calendar Life

Abuse test

