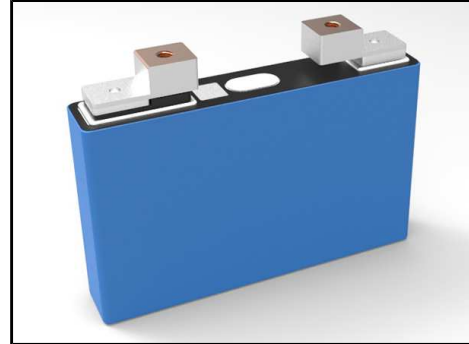


## BATTERIES

# ETC-NCM42W / ETC-NCM42S



Dimension (excluding terminals)



27mm x148mm x 92mm



Weight

Max. 870 g

Min. capacity

42Ah (1/3C) @ 25°C

Min. energy

155 Wh (1/3C) @ 25°C

SOC window

15 ~ 95 %

Terminal

Welding terminal / Screw Terminal

Voltage

Max.

4.20 V

Nominal

3.65 V

Min.

3.00 V

Energy density

Gravimetric

180Wh/kg

Volumetric

430Wh/L

Temp. Condition

Operation (Charge)

-15 ~ 55°C (-15°C ≤ 0.05C to 80%SOC)

Operation (Discharge)

-30 ~ 55°C

Storage

-30 ~ 55°C

Self-Discharge Rate

100% SOC, 25°C, 1month

≤3%

Fast charging ability

25°C

30min, 80%SOC

High temperature storage 60°C, 30Days, irreversible capacity loss

<5%

Cycle Life

1C/1C, 80% DOD 25°C

2,000 cycles

1C/1C, 80% DOD 45°C

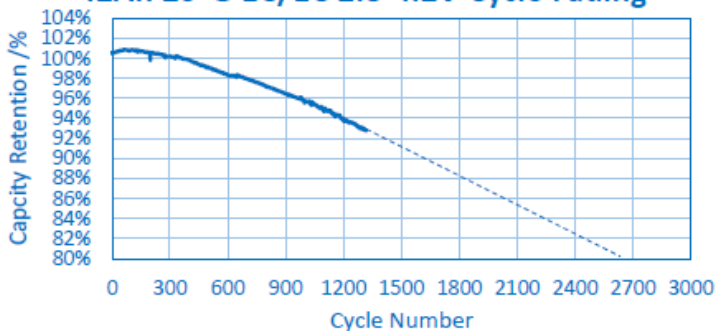
1,000 cycles

Abuse test

Overcharge, Over-discharge, Short, Heat

GB/T 31485-2015

42Ah 25°C 1C/1C 2.8-4.2V Cycle Fading



42Ah 60°C 1C/1C 2.8-4.2V Cycle Fading

