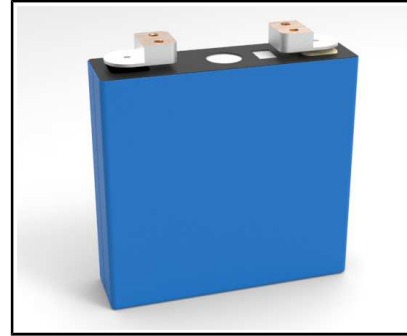
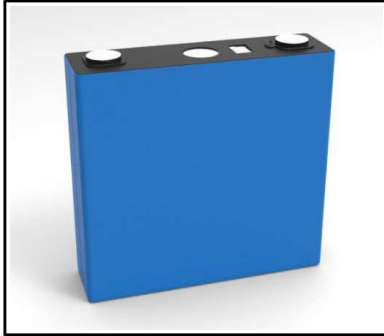


BATTERIES

ETC-LFP120W / ETC-LFP120S



	Dimension (excluding terminals)	487mm x 174mm x 166mm
	Weight	Max.2950g
	Min. capacity	120Ah (0.5C) @ 25°C
	Min. energy	384Wh (0.5C) @ 25°C
	SOC window	15 ~ 95 %
	Terminal	Welding terminal / Screw terminal
Voltage	Max.	3.65 V
	Nominal	3.20 V
	Min.	2.50 V(>0°C) / 2.00V(≤0°C)
Energy density	Gravimetric	130Wh/kg
	Volumetric	271Wh/L
Temp. Condition	Operation (Charge)	0 ~ 55°C
	Operation (Discharge)	-20 ~ 55°C
	Storage	-30 ~ 55°C
Self-Discharge Rate	Count after fresh cell need Standard Charge to 50%SOC and storage at 25±2°C for 3 month	≤3%
Fast charging ability	25°C	1C
Cycle Life	1C/1C, 100% DOD 25°C	2,000 cycles
	1C/1C, 100% DOD 45°C	1,200 cycles
Abuse test	Overcharge, Over-discharge, Short, Heat	GB/T 31485-2015

